

30

YEARS
SAGA CRUISES

BRAND-NEW WINTER

2027

BOUTIQUE CRUISES

SAVE UP TO 35% FOR A LIMITED TIME!

Included excursion in every port

**Nationwide shared
chauffeur service included**

**Travel insurance and additional
cancellation cover included**

**All prices backed by our
Cruise Price Promise**

January to March 2027

SAGA

Experience is everything





I am pleased to share with you our brand-new collection of Winter 2027 cruises, which marks the start of the 30th anniversary year of Saga Cruises. All these cruises are now on sale and available to book.

This inspiring season features eight new itineraries sailing from January to March 2027 aboard our boutique sister ships, Spirit of Discovery and Spirit of Adventure. The highlight is a once-in-a-lifetime 73-night grand voyage to South America visiting Brazil, Argentina, Chile and beyond. Alongside this epic journey, you will also find a choice of Canaries, Mediterranean and a Northern Lights cruise, all designed to offer a diverse selection of destinations and experiences during the winter months.

To recognise our 30th anniversary and to help us celebrate this milestone, we will be including premium wines as part of our on-board offering on all these new cruises. So please do join us on board and raise a glass to celebrate our special anniversary year.

As always, every boutique cruise continues to offer great value for money with a return nationwide chauffeur service, an included excursion in every port, all-inclusive drinks, speciality dining, on-board Wi-Fi, gratuities, plus travel insurance and additional cancellation cover – all included. Combined with our renowned personal service, these details ensure that your cruise is always enjoyable.

To secure your preferred cabin and itinerary for 2027, and the best possible savings of up to 35% off the full fares, I recommend that you book as early as possible, as these discounts will reduce quickly over the coming weeks.

When you are ready, please do call my team of friendly UK-based Cruise Consultants free on 0808 159 8018 quoting CMAIN, or visit saga.co.uk/cruise where you can easily book these new cruises online.

I hope we will have the pleasure of welcoming you aboard for an unforgettable all-inclusive cruise in 2027, our 30th anniversary year.

With warmest wishes

Nigel Blanks,
Chief Executive Officer, Saga Travel



Celebrate our anniversary with included premium wines

We have a whole host of surprises planned to celebrate our 30th anniversary year. And on all these new 2027 cruises, we are adding a selection of premium wines to our all-inclusive offering, so you can say 'cheers' on us! Along with an included excursion in every port, our return nationwide chauffeur service and other generous inclusions, it means you can look forward to exceptional value on your 2027 cruise.





LAUNCH SAVINGS!
 SAVE UP TO
35%
 OFF THE FULL FARES
 WHEN YOU BOOK EARLY

ALL PRICES
 BACKED BY OUR
**CRUISE PRICE
 PROMISE**

Three reasons
**to book your
 Winter 2027
 cruise early**

1

**Our promise for
 peace of mind**

Every booking is backed by our Cruise Price Promise, which means you can book early with confidence that if we reduce the price of your cabin grade after you have booked, you will receive the value of the difference.

2

**A higher chance of securing
 a greater discount**

The earlier you book, the higher your chance of securing a greater discount of up to 35% off the full fares. These offers are only available on a limited number of cabins, so once they are gone, they are gone.

3

**The widest choice of
 cabins and itineraries**

We had an overwhelming response last season. If you have your eye on a particular cabin, or there is a special itinerary you do not want to miss, booking early is best.



Front cover: Rio de Janeiro, Brazil.
 Pictured left: Enjoy a thrilling ride on a husky sled.

Exciting new experiences for 2027

Our brand-new winter 2027 cruises have launched, and it is our most exciting season yet as we celebrate 30 years of Saga Cruising!

The year will begin with eight new all-inclusive luxury cruises, including a once-in-a-lifetime voyage to South America as part of our anniversary celebrations. Where will you discover?

INCLUDED EXCURSION IN EVERY PORT

Every cruise will include an excursion in every port you visit. This will allow everyone the opportunity to go ashore, and to get a perfect introduction to the places you are visiting with panoramic tours and guided walks.

A GRAND VOYAGE TO SOUTH AMERICA

The highlight of our brand-new 2027 season is a 73-night epic voyage to South America. This remarkable journey explores a continent of colours and contrasts, from the rhythms of Rio to the glaciers of Chile. Stand under the iconic Christ the Redeemer and ascend Sugarloaf Mountain by cable car, experience the passion of Tango in Buenos Aires, drop anchor at the Falkland Islands, discover the ethereal Chilean fjordlands, and so much more!

See page 8.





SEARCH FOR THE NORTHERN LIGHTS IN 2027

Seeing the aurora borealis light up the night sky is an incredible experience, and our new cruise will take you to the best spot at the peak time of year for viewing them. You can enjoy optional tours from the polar port of Alta to see the lights with a guide. But often there are incredible viewings from the ship's deck too, and the Captain will make announcements so you do not miss out.

See page 18.

THRILLING WINTER ACTIVITIES

Our new Northern Lights voyage is also your chance to enjoy thrilling winter activities such as husky dog sledding. You will don a special thermal suit to stay warm, then set off with the pack as you are taken through snow-covered hills and glades lined with Norwegian spruces – it is a thrilling experience! After the unforgettable adventure, warm up with a hot drink and a slice of homemade cake served around a roaring open fire. Other optional winter activities available include reindeer sledding (pictured right) and a visit to a real ice hotel, making the Northern Lights cruise a truly magical experience from start to finish.

See page 18.





A CRUISE BACK IN TIME

Following her return from South America, Spirit of Adventure will embark on another new itinerary to the exotic shores of Egypt, Turkey, Italy, Malta, Crete, Cyprus and Greece. Get up close to some of history's most famous archaeological sites, from Pompeii and Ephesus to the Acropolis of Athens and Heraklion. An overnight call to Alexandria also means you can join an optional tour to Cairo and the Pyramids of Giza, to see the only one of the original Seven Wonders of the Ancient World that is still standing.

See page 16.

THE WESTERN MEDITERRANEAN

Early in 2027, you can also enjoy a boutique cruise to the Balearic Islands and the Western Med. From the bustling harbours of Valencia and Mahon to the tranquil beauty of Majorca's Valldemossa village, look forward to Spain's vibrant contrast of cultures. You will also visit Gibraltar, famed for its mischievous Barbary macaques!

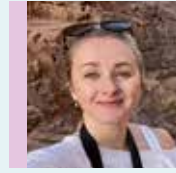
See page 17.



EXPLORE CASABLANCA

Each of our Canary Island cruises features something a little bit different, including the January 2027 departure aboard Spirit of Discovery. On this itinerary, you will also stop at the fabled city of Casablanca in Morocco. You can say “play it, Sam” at the famous Rick’s Café, visit the striking Hassan II Mosque, or enjoy an authentic shopping experience by heading into the medina with a local guide.

See page 14.



Our new itineraries offer the opportunity to discover iconic cities such as Lisbon and Funchal during the quieter season. I recommend hopping onto one of our optional tuk-tuk excursions where you can discover areas of these cities inaccessible to cars and buses, for a completely new perspective.”

**Poppy Ridgard,
Destination
Experience Executive**

START THE YEAR IN THE CANARIES

It really is the perfect time to visit. After Christmas and the New Year, leave the cooler shores of the UK behind, and head south where the Canary Islands offer a milder climate and beautiful scenery to admire. Or, you can also visit in March, just as the islands come alive in the spring.

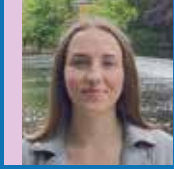
Relax in all-inclusive luxury as you go hopping around the different islands, or set off for more active pursuits such as hikes and rainforest walks.

See pages 14-15.



Please note: Only one included excursion per person can be booked in each port of call. Selected excursions are optional, at an additional cost, and are subject to availability and change. Some of the highlights detailed may only be seen on optional excursions or by exploring independently.

A Grand Voyage to South America



“

Rio de Janeiro is a standout port for me on this itinerary, where lush mountain peaks meet golden beaches and the rhythm of Samba fills the air. I recommend taking an optional excursion to Corcovado Mountain to see the Christ the Redeemer statue, one of the New Seven Wonders of the World. Or perhaps discover the secrets to Rio's famous carnival with a behind the scenes tour. With an extended stay in port until 10pm there is plenty of time to experience the magic of Rio de Janeiro.

Amelia Peters,
Destination Experience Executive



SAVE UP TO
35%
OFF THE FULL FARE[^]

PRIVATE
CHAUFFEUR
SERVICE
INCLUDED



73 nights from **£26,667**

Including travel insurance and cancellation cover or a reduction of £1,556 if not required – see page 19 for details.

SHIP: Spirit of Adventure
INCLUDED EXCURSION IN EVERY PORT
SAILING: January 7, 2027
CRUISE CODE: SU180

Embark on the voyage of a lifetime as you circumnavigate South America in search of captivating landscapes, ancient civilisations, and characterful cities.... This is a cruise for the adventurous. After a memorable Transatlantic crossing, with visits to Gran Canaria and Cape Verde en route, you arrive in Brazil, a land of natural wonders, rhythm-filled cities, and indigenous folklore. Take in a succession of vibrant cities: Brazil's first capital Salvador, samba-fuelled Rio de Janeiro, and Uruguay's eclectic capital, Montevideo. Enjoy an overnight visit to dynamic Buenos Aires, known as the 'Paris of South America'. As you continue to cruise south, call at the Argentine city of Puerto Madryn, a new port for Saga Cruises, and enjoy an extended visit to the Falkland Islands, before navigating the southern tip of South America, Cape Horn. Discover the unparalleled wilderness of Patagonia, cruise past the glaciers of Amalia and Brüggen, and admire Chile's Lake District, with its sapphire-blue lakes and ancient forests. Visit Peru for an overnight stop in Callao, gateway to Lima, and see the colonial architecture of historic Trujillo from Salaverry. Continue to another new port for Saga Cruises, Fuerte Amador, set at the entrance to Panama Bay and gateway to Panama City. Then, transit the Panama Canal to Colón and explore UNESCO-listed Cartagena. In the Caribbean Sea, uncover Dutch influences in Aruba, step ashore on the 'Isle of Spice' Grenada and experience the laid-back atmosphere in the tropical islands of Tobago and Barbados. Finally, call at São Miguel, the largest island in the Portuguese archipelago of the Azores.

RIO DE JANEIRO, BRAZIL

The adventure begins...

Jan 7. Portsmouth. Depart 1700.

Jan 12. Las Palmas, Gran Canaria. Arrive 0800.

Depart 1700. Nearly half of Gran Canaria has been declared a UNESCO Biosphere Reserve. The island is fringed with beautiful coves and sandy beaches to the south and wild mountains to the north. The subtropical capital of Las Palmas is set beside two broad bays and features cafe-lined squares and courtyards. The oldest sights can be seen in a trio of historic neighbourhoods: San Antonio, Triana and Vegueta. You can explore further with a choice of an included excursion.

Jan 15. Porto da Praia, Santiago, Cape Verde.

Arrive 0730. Depart 1930. The Cape Verde archipelago is set off the African coast. The main island in this volcanic chain, Santiago was used as a stopping-off place by two great navigators: Vasco da Gama in 1497 and Christopher Columbus in 1498. Praia, the current capital, is set on a plateau above the port. Explore Praia on an included excursion on foot.

Jan 21. Salvador, Brazil. Arrive 0800. Depart 1900.

Salvador is set at the tip of a peninsula beside the Bay of All Saints and runs along a ridge that splits the city in two. As Brazil's first capital, which was founded by the Portuguese in 1549, the UNESCO-listed old town of Pelourinho is a colourful blend of European, African and Amerindian cultures. It is celebrated for the stucco-decorated manors, colonial palaces and Baroque churches, including the Cathedral Basilica of Salvador. See the key sights of Salvador on an included excursion.

Jan 24. Rio de Janeiro, Brazil. Arrive 0600.

Depart 2200. The Art Deco statue of Christ the Redeemer atop Corcovado welcomes visitors to Rio de Janeiro, a city set between the Tijuca Mountains and Guanabara Bay. This lively city is famous for its world-renowned Copacabana and Ipanema beaches, exuberant annual carnival and iconic Sugar Loaf Mountain. Experience Rio de Janeiro's sights and sounds on an included excursion.

Jan 28-29. Buenos Aires, Argentina. Arrive 0800 on

Jan 28. Depart 1700 on Jan 29. Cruise up the Rio de la Plata into the heart of Buenos Aires, Argentina's vibrant capital. Known as the 'Paris of South America', the city prospered during the 19th century which is reflected in its wealth of Art Deco, Art Nouveau and neoclassical architecture. The main square, Plaza de Mayo, has been a central gathering place since then and is overlooked by the pink presidential Casa Rosada Palace. In contrast, the bohemian La Boca district is packed full of brightly-painted shanty houses that were established by working-class immigrants. An included excursion will point out the highlights.

Jan 30. Montevideo, Uruguay. Arrive 0800.

Depart 1900. Founded by the Spanish in the 18th century, the modern capital of Montevideo hides a charming old town. The neoclassical Metropolitan Cathedral in Plaza Matriz, vibrant indoor market and Solis Theatre are key colonial sights reached through

the Gateway to the Citadel arch, all that remains of the original walls. The city's downtown is also a treasure trove of Art Deco buildings. Discover Montevideo's European influences on an included excursion.

Feb 2. Puerto Madryn, Argentina. Arrive 0800.

Depart 1700. The Argentine city of Puerto Madryn is set on the northern coast of Patagonia, in an area renowned for its wildlife and Welsh heritage. In 1865 around 150 Welsh emigrants travelled 8,000 miles to arrive in Argentina aboard a tea-clipper boat to establish a new homeland. Puerto Madryn also offers a gateway to the UNESCO-listed Península Valdés. See some of the highlights of Puerto Madryn on an included excursion.

Feb 4-5. Stanley, Falklands. Arrive 0900 on Feb 4.

Depart 1700 on Feb 5. The capital of the Falkland Islands offers a taste of familiarity with its Victorian buildings, Anglican cathedral and lighthouse. Christ Church is the world's most southerly cathedral, with the arch in front said to be the most photographed sight in the islands: it is made from the jawbones of two blue whales. The Historic Dockyard Museum has extensive displays on the 1982 conflict with Argentina, as well as exhibits about the islands' history, flora and fauna. See Magellanic penguins on an included excursion to Gypsy Cove.

Feb 7. Scenic cruising. Cruise past Cape Horn, the southernmost point of the Tierra del Fuego archipelago of southern Chile.

Feb 9. Punta Arenas, Chile. Arrive 0800. Depart 1700.

Cruise through the Strait of Magellan to reach the remote city of Punta Arenas, an interesting mix of tin roofs and European influences set in southernmost Chile. Named 'Sandy Point' by an English sailor, it is a bustling port thanks to its strategic location on a busy maritime route and acts as a springboard for expeditions into the Patagonian wilderness. Explorer Ferdinand Magellan is remembered in a memorial that stands in Plaza Muñoz Gamero and a replica of one of his vessels is displayed as the Museo Nao Victoria. Discover the highlights of Punta Arenas on an included excursion.

Feb 10. Scenic cruising. Today, Spirit of Adventure will cruise past the Amalia Glacier, a tidewater glacier on the edge of the Sarmiento Channel, one of the main channels in Patagonia.

February 11. Scenic cruising. Cruise past the Brüggen Glacier, known by Spanish explorers as the PIO X Glacier. Located in Chile's southern Ice Field, it is the largest glacier in South America and it continues to advance.

Feb 14. Puerto Montt, Chile. Arrive 0800.

Depart 2200. Founded by German settlers in 1853, Puerto Montt is a door to the Chilean Lake District. Explore the city with its wooden neoclassical style cathedral, visit the handicraft and fish markets at Angelmo or maybe learn about Puerto Montt's rich German heritage at the German Colonial Museum. Admire the scenery of lakes and snow-capped volcanoes on an included excursion to the nearby towns of Puerto Varas and Frutillar.



BUENOS AIRES, ARGENTINA



SALVADOR, BRAZIL



STANLEY, FALKLANDS



THE AMALIA GLACIER ON THE EDGE OF THE SARMIENTO CHANNEL



OSORNO VOLCANO AND LLANQUIHUE LAKE IN CHILE'S LAKE DISTRICT



TOBAGO'S COASTLINE



ST GEORGE'S, GRENADA



GUTAN LAKE, PANAMA

Feb 17. Valparaiso, Chile. Arrive 0800. Depart 2200.

Set on Chile's Pacific coast, photogenic Valparaiso is characterised by its colourful hillside homes, reached by funiculars, earning it a place on UNESCO's World Heritage List. This merchant city flourished during the 19th century, attracting migrants from near and far who have left a lasting imprint, most noticeably in the wooded neoclassical cathedral. Discover its different districts on an included excursion.

Feb 21-22. Callao, Peru. Arrive 0800 on Feb 21.

Depart 1800 on Feb 22. The seaside resort of Callao is also the port for Lima, Peru's capital and largest city. Surrounded by deserts and backed by the Andes, it was originally declared uninhabitable. Now it is a thriving metropolis of skyscrapers, colonial gems and ancient ruins. Its UNESCO-listed historic centre, known as the 'City of Kings', encompasses the 17th-century church that miraculously survived Lima's earthquakes in 1746 and 1940. Discover the highlights of Lima's past and present on an included excursion or exploration on foot.

Feb 24. Salaverry (for Trujillo), Peru. Arrive 0800.

Depart 2000. From the port city of Salaverry, travel inland to visit Trujillo. This historic city, birthplace of Peru's national Marinera dance, is also known for its colonial architecture, rich culture and pre-Incan archaeological sites. Founded in 1534 by Spanish conquistador Diego de Almagro, Trujillo was the first Peruvian city to declare independence from Spanish rule. Enjoy an included excursion in Trujillo.

Feb 28. Fuerte Amador, Panama. Arrive 0800.

Depart 2000. Set at the entrance to the Panama Bay, Flamenco Island is linked to Panama City by the Amador Causeway. Known for its beaches, scenic pier, and waterfront bars and restaurants it offers a peaceful contrast to the hustle and bustle of the capital, Panama City. Explore Panama City on an included excursion or discover the historic district of Casco Viejo on foot.

Mar 1. Transit the Panama Canal. One of the world's greatest feats of engineering, this 50-mile-long waterway which opened in 1914 connects the Atlantic and Pacific Oceans. Enjoy the surrounding scenery as you spend the whole day cruising this scenic stretch through a series of locks and across the Gatun Lake.

Mar 2. Colón, Panama. Arrive 0800. Depart 2100.

Colón marks the Caribbean end of the Panama Canal. It was born in 1850 out of a desire to reach California quickly during the Gold Rush. On the shoreline stands the ruined 16th-century Fort San Lorenzo which pre-dates the city, while Zona Libre offers duty-free shopping. In nearby Portobello, you can watch the colourful yachts in the bay, or hunt for treasures in the local markets. See the highlights of Colón on an included excursion.

Mar 4. Cartagena, Colombia. Arrive 0800.

Depart 1700. Founded in 1533 by the Spanish, Cartagena sits in a sheltered bay. Its historic core has been declared a UNESCO World Heritage Site. It encompasses an extensive network of fortifications unlike any other in the New World. The old town is encircled by miles of old stone walls and is a tightly packed maze of alleyways lined with Andalusian-style palaces, churches and mansions. Of special note is the immense fortress of Castillo San Felipe de Barajas, the largest of its kind. Gain an overview of the city on an included excursion.

Mar 6. Oranjestad, Aruba. Arrive 0800. Depart 1700.

With brightly coloured buildings that mirror those in Amsterdam, Oranjestad's Dutch heritage is clear to see. The capital Oranjestad combines European-style architecture with the sights you would expect to find on a Caribbean island, pristine beaches, swaying palms and crystal-clear waters. Discover the island highlights on an included excursion.

Mar 8. St George's, Grenada. Arrive 0800.

Depart 1900. Dubbed the 'Isle of Spice' thanks to the abundance of nutmeg and cinnamon found here, Grenada is the southernmost island of the Antilles archipelago. View more of the island on an included scenic drive.

Mar 9. Scarborough, Tobago. Arrive 0800.

Depart 1700. Scarborough is a lively town dominated by the 18th-century hilltop Fort King George, which houses the Tobago Museum. In the lower Scarborough area, Scarborough Market features stalls selling clothing and fresh produce. While the nearby Botanical Gardens are home to indigenous plants and trees. See more of the island on a scenic drive.

Mar 10. Bridgetown, Barbados. Arrive 0800.

Depart 1700. Barbados offers a blend of West African and British culture, having remained a British colony until 1966. The island's lively capital Bridgetown features 17th-century buildings and a historic Garrison, which is included on the UNESCO World Heritage list. Explore more of Barbados on an included excursion.

Mar 17. Ponta Delgada, São Miguel, Azores.

Arrive 0800. Depart 1700. Scattered in the North Atlantic Ocean, the Portuguese archipelago of the Azores is made up of nine islands, and Ponta Delgada is the capital of the largest of these, São Miguel. Aptly known as 'Green Island', São Miguel is characterised by its volcanic landscapes – to the east lies geothermal Furnas Lake with its bubbling fumaroles and hot springs, while in the northwest the green and blue crater lakes of Sete Cidades are situated. An included excursion is a great way to see more of the scenery.

Mar 21. Portsmouth. Arrive 0700.

SAVE up to 35% off the full fare^

All prices from	DOUBLE/TWIN Balcony Cabin			SINGLE Balcony Cabin			
	Standard	Deluxe	Suite	Standard	Superior	Deluxe	Suite
Jan 7, 2027. SU180							
Full fare	£35,557	£58,098	£72,385	£48,357	£64,918	£84,242	Sold Out
Current fare	£26,667	£37,763	£47,050	£41,103	£45,442	£63,181	-

Cruise code: SU180. Fares are per person and the lowest available in the category shown and are subject to availability and change. **^Fares above include applicable percentage discount off the full fare** – see page 19 for details. **Please note:** ↓ Land by launch or tender.

Canary Islands

New cruises 2027

At the start of the New Year, our boutique ship Spirit of Discovery will head to the winter sun of the Canaries. Expect beautiful volcanic scenery and charming villages as you go hopping around the different islands. Each itinerary offers something a little different, from the chance to explore the exotic shores of Morocco, to an overnight stay on the 'floral isle' of Madeira, famed for its botanical gardens.



Casablanca and Canary Island Duo

Uncover 3,000 years of history in ancient Cádiz before cruising to the bustling Moroccan port of Casablanca, where European, North African and Arab influences can be seen. The lanes of the city's 19th-century medina are overlooked by Moorish buildings that lead to the colonial downtown and the exotic spice and fruit stalls of the Central Market. Continue south to the Canaries where each island has its own unique identity. Step ashore in the greenest of the Canaries, La Palma, where large tracts of its laurel forests have been declared a UNESCO Biosphere Reserve. Its capital, Santa Cruz, was a hub for New World explorers and merchant traders during the Age of Exploration and its history is reflected in the 16th-century Castilian architecture. While Tenerife, whose skyline is dominated by the World Heritage Site, Mount Teide, is known for its dramatic coastal cliffs, black volcanic beaches and the lunar-like landscapes of Teide National Park. Your cruise concludes with an overnight visit to the 'floating garden in the Atlantic' Madeira, home to the world's largest laurel forest and Botanical Gardens.

14 nights from **£3,917**

Including travel insurance and cancellation cover or a reduction of £102 if not required – see page 19 for details.

SHIP: Spirit of Discovery
INCLUDED EXCURSION IN EVERY PORT
SAILING: January 6, 2027
CRUISE CODE: SD203

Sailing from Portsmouth • Cádiz, Spain • Casablanca, Morocco • Santa Cruz, La Palma • Santa Cruz, Tenerife • Funchal, Madeira. **Returning to Portsmouth.**

SAVE up to 35% off the full fare[^]

All prices from	DOUBLE/TWIN Balcony Cabin			SINGLE Balcony Cabin			
	Standard	Deluxe	Suite	Standard	Superior	Deluxe	Suite
Jan 6, 2027. SD203							
Full fare	£5,597	£9,029	£11,616	£8,258	£9,169	£13,591	£17,048
Current fare	£3,917	£5,868	£7,550	£5,780	£6,418	£8,834	£11,081

Cruise code: SD203. Fares are per person and the lowest available in the category shown and are subject to availability and change. **[^]Fares above include applicable percentage discount off the full fare** – see page 19 for details.



MOUNT TEIDE, TENERIFE



LA PALMA

Canary Island Sunshine

Discover the UNESCO-listed landmarks, colourful architecture and rich history of Portugal's vibrant capital Lisbon. Then, cruise to the Canary Islands, known for their unusual volcanic scenery, traditions, culture and year-round sunshine. Visit Lanzarote and its peaceful capital Arrecife, where the nearby Cactus Garden and César Manrique Foundation reveal more about the life and work of the island's most famous son. In Gran Canaria, with its beautiful coves, beaches and mountains, perhaps explore the historic neighbourhood of Vegueta in the capital Las Palmas or head to the charming, white-washed town of Puerto de Mogán. Contrast the black sand beaches and volcanic terrain of Teide National Park in Tenerife with the extensive laurel forests of La Palma, the greenest of the Canaries. Its capital, Santa Cruz, features 16th-century Castilian architecture, cobbled lanes and an old quarter set around a Renaissance plaza. An overnight stay at the green island of Madeira, with its laurel forests and botanical garden, provides a scenic conclusion to your cruise.

15 nights from £4,584

Including travel insurance and cancellation cover or a reduction of £87 if not required – see page 19 for details.

SHIP: Spirit of Discovery
INCLUDED EXCURSION IN EVERY PORT
SAILING: January 20, 2027
CRUISE CODE: SD204

Sailing from Portsmouth · Lisbon, Portugal · Arrecife, Lanzarote · Las Palmas, Gran Canaria · Santa Cruz, Tenerife · Santa Cruz, La Palma · Funchal, Madeira.

Returning to Portsmouth.

The Canary Islands in Spring

Visit the verdant island of Madeira, with its laurel forests and botanical garden, en route to the Canary Islands, renowned for their year-round sunshine and unique volcanic landscapes. Contrast the greenest of the Canaries, La Palma, with the largest island in the archipelago, Tenerife, where black sand beaches and the unusual volcanic terrain of Teide National Park can be seen. In Gran Canaria, an island fringed with beautiful coves and beaches to the south and mountains to the north, perhaps explore the historic neighbourhood of Vegueta in the capital Las Palmas or head to the picturesque, white-washed town of Puerto de Mogán. Visit Lanzarote and its peaceful capital Arrecife, where the nearby Cactus Garden and César Manrique Foundation offer an insight into the life and work of the island's most famous son. Your cruise concludes with a visit to Portugal's colourful capital Lisbon, with its UNESCO-listed monuments.

14 nights from £4,634

Including travel insurance and cancellation cover or a reduction of £87 if not required – see page 19 for details.

SHIP: Spirit of Discovery
INCLUDED EXCURSION IN EVERY PORT
SAILING: March 24, 2027
CRUISE CODE: SD208

Sailing from Portsmouth · Funchal, Madeira · Santa Cruz, La Palma · Santa Cruz, Tenerife · Las Palmas, Gran Canaria · Arrecife, Lanzarote · Lisbon, Portugal.

Returning to Portsmouth.

SAVE up to 35% off the full fare[^]

All prices from	DOUBLE/TWIN Balcony Cabin			SINGLE Balcony Cabin			
	Standard	Deluxe	Suite	Standard	Superior	Deluxe	Suite
Jan 20, 2027. SD204							
Full fare	£6,549	£10,564	£13,592	£9,663	£10,729	£15,902	£19,949
Current fare	£4,584	£6,866	£8,834	£6,764	£7,510	£10,336	£12,966

Cruise code: SD204. Fares are per person and the lowest available in the category shown and are subject to availability and change. [^]Fares above include applicable percentage discount off the full fare – see page 19 for details.

SAVE up to 35% off the full fare[^]

All prices from	DOUBLE/TWIN Balcony Cabin			SINGLE Balcony Cabin			
	Standard	Deluxe	Suite	Standard	Superior	Deluxe	Suite
Mar 24, 2027. SD208							
Full fare	£6,179	£10,494	£12,826	£9,691	£10,123	£15,006	£18,823
Current fare	£4,634	£6,821	£8,336	£6,783	£7,086	£9,753	£12,234

Cruise code: SD208. Fares are per person and the lowest available in the category shown and are subject to availability and change. [^]Fares above include applicable percentage discount off the full fare – see page 19 for details.

The Mediterranean

New cruises 2027

Sail away to the beautiful Mediterranean on a choice of new itineraries departing early in 2027. You could step back in time in ancient Egypt and explore some of the country's iconic sites. Contrast mainland Spain and her islands with the buzz of Tangier in Morocco, or discover historic ports such as Cartagena, Gibraltar and Cádiz.



PYRAMIDS OF GIZA, EGYPT



Egypt and the Eastern Mediterranean

Follow the trail of the Mediterranean's great civilisations past and present on this cruise to the eastern Mediterranean, with opportunities to explore ancient archaeological sites such as Pompeii, the Acropolis and the Pyramids of Giza. See the influences of ancient Roman civilisations in Salerno, on Italy's Tyrrhenian coast, and visit the Turkish town of Kusadasi, gateway to ancient Ephesus. From Pireaus, head to Athens, 'The Cradle of Western Civilisation', where the city is overlooked by Athens' crowning achievement, the UNESCO-listed Acropolis. Cruise to Limassol on the southern coast of Cyprus, an island where historic attractions include Limassol Castle, the archaeological sites of Kourion and Kolossi, and the UNESCO-listed Tombs of the Kings. An overnight visit to Alexandria is sure to be a highlight and it offers the opportunity to explore the Pyramids of Giza and The Grand Egyptian Museum, and El Alamein on a choice of optional excursions. More relics await in Heraklion, with its Venetian and Turkish fountains, and Valletta, home to forts built by the Knights of St John in the 16th century. This action-packed cruise concludes with a visit to Malaga, home to impressive Moorish citadels.

27 nights from **£9,496**

Including travel insurance and cancellation cover or a reduction of £102 if not required – see page 19 for details.

SHIP: Spirit of Adventure

INCLUDED EXCURSION IN EVERY PORT

SAILING: March 21, 2027

CRUISE CODE: SU181

Sailing from Portsmouth • Gibraltar • Mahon, Minorca • Salerno, Italy • Kusadasi, Turkey • Pireaus (for Athens), Greece • Limassol, Cyprus • Alexandria, Egypt • Heraklion, Crete • Valletta, Malta • Malaga, Spain. **Returning to Portsmouth.**

SAVE up to 35% off the full fare[^]

All prices from	DOUBLE/TWIN Balcony Cabin			SINGLE Balcony Cabin		
	Standard	Deluxe	Suite	Standard	Superior	Suite
Mar 21, 2027. SU181						
Full fare	£11,870	£18,366	£25,645	£17,514	£19,445	£28,825
Current fare	£9,496	£12,856	£16,669	£14,011	£15,556	£21,618

Cruise code: SU181. Fares are per person and the lowest available in the category shown and are subject to availability and change. [^]Fares above include applicable percentage discount off the full fare – see page 19 for details.



A Taste of Morocco and Historic Spain

Delve into the history and culture of Spain with visits to Barcelona, Valencia and Malaga. The cities feature numerous museums, galleries and sights to see, from Barcelona's Sagrada Familia and Placa de Catalunya, to the Gothic La Lonja Silk Stock Exchange in Valencia and the imposing Moorish Alcazabas of Malaga. Continue your cruise to discover the Islamic imperial grandeur and old-European charm of Morocco. Explore the exotic city of Tangier, which lies on a bay between two promontories – you can enjoy panoramic views if you head up to the ancient Kasbah, a former military fortress now full of elegant buildings and architecture. The return journey includes a visit to 3,000-year-old Cádiz in Andalusia and the Portuguese city of Leixoes. Known for its narrow streets, granite church towers and Baroque architecture, it is a great starting place from which to visit nearby Oporto with its 12th-century cathedral, neoclassical Stock Exchange and Manueline-style Church of Santa Clara.

16 nights from **£5,220**

Including travel insurance and cancellation cover or a reduction of £102 if not required – see page 19 for details.

SHIP: Spirit of Discovery

INCLUDED EXCURSION IN EVERY PORT

SAILING: February 4, 2027

CRUISE CODE: SD205

Sailing from Portsmouth • Gibraltar • Barcelona, Spain • Valencia, Spain • Malaga, Spain • Tangier, Morocco • Cádiz, Spain • Leixoes (for Oporto), Portugal. **Returning to Portsmouth.**

The Balearics and Western Mediterranean

Cruise to Gibraltar at the base of the unmistakable Rock of Gibraltar, which stands guard over the entrance to the Mediterranean. Off the coast of Spain, contrast the peaceful, laid-back atmosphere of Minorca with its livelier neighbour Majorca, where the capital Palma is characterised by palm-fringed squares lined with stylish shops and cafes. Continue to visit a trio of ancient Spanish ports. Valencia, founded by the Romans, features a wealth of magnificent architecture in its old town, with attractions such as the 13th-century cathedral and the Gothic La Lonja Silk Stock Exchange. While Cartagena is also historically significant, founded by the Carthaginians, then captured by the Romans. A Roman theatre was unearthed here in 1988 and the surrounding hills are crowned by castles, while the harbour is protected by an 18th-century sea wall. The final port on this Mediterranean cruise is 3,000-year-old Cádiz, Western Europe's oldest continually inhabited city since its founding by the ancient seafaring Phoenicians. It is strung along a peninsula, and was refortified in the 17th-century. Key landmarks include the Baroque and neoclassical cathedral, the Roman amphitheatre, Castillo de Santa Catalina and the Torre Tavira – one of 129 watchtowers dotted throughout the city.

15 nights from **£4,927**

Including travel insurance and cancellation cover or a reduction of £87 if not required – see page 19 for details.

SHIP: Spirit of Discovery

INCLUDED EXCURSION IN EVERY PORT

SAILING: March 9, 2027

CRUISE CODE: SD207

Sailing from Portsmouth • Gibraltar • Mahon, Minorca • Palma, Majorca • Valencia, Spain • Cartagena, Spain • Cádiz, Spain. **Returning to Portsmouth.**

SAVE up to 35% off the full fare [^]							
All prices from	DOUBLE/TWIN Balcony Cabin			SINGLE Balcony Cabin			
	Standard	Deluxe	Suite	Standard	Superior	Deluxe	Suite
Feb 4, 2027, SD205							
Full fare	£7,458	£12,032	£15,479	£11,004	£12,217	£18,111	£22,718
Current fare	£5,220	£7,820	£10,061	£7,702	£8,551	£11,772	£14,766

Cruise code: SD205. Fares are per person and the lowest available in the category shown and are subject to availability and change. [^]Fares above include applicable percentage discount off the full fare – see page 19 for details.

SAVE up to 35% off the full fare [^]							
All prices from	DOUBLE/TWIN Balcony Cabin			SINGLE Balcony Cabin			
	Standard	Deluxe	Suite	Standard	Superior	Deluxe	Suite
Mar 9, 2027, SD207							
Full fare	£6,570	£10,600	£13,637	£9,694	£10,763	£16,716	£20,014
Current fare	£4,927	£6,890	£8,864	£6,785	£8,072	£10,865	£13,009

Cruise code: SD207. Fares are per person and the lowest available in the category shown and are subject to availability and change. [^]Fares above include applicable percentage discount off the full fare – see page 19 for details.

Northern Lights and Arctic Vistas

Bergen boasts a historic waterfront of colourful gabled buildings, easily explored on foot. Its charming old town features cobbled lanes punctuated by attractive squares lined with 17th-century wooden houses. Continue to Ålesund, with its Art Nouveau architecture, and Trondheim, where you can see Nidaros Cathedral, built on the grave of St Olav, Norway's patron saint and the Viking king who founded the city. Cruising north into the Arctic Circle, visit Honningsvåg and enjoy an included excursion to the North Cape, before an overnight visit to Alta, with opportunities to view the magical Northern Lights while on board and during optional excursions. Perched squarely within the Aurora Belt, Tromsø offers further opportunities for exciting winter activities, from dog-sledding to reindeer sledding. On the return cruise south, stop to explore the idyllic village of Flåm, nestled at the end of the Aurlandsfjord. One of the main highlights here is the historic Flåm railway, dubbed 'the world's most beautiful train journey'. The track winds up from the fjord through the Flåm Valley, passing frozen waterfalls along the way.

17 nights from £5,956

Including travel insurance and cancellation cover or a reduction of £87 if not required – see page 19 for details.

SHIP: Spirit of Discovery
INCLUDED EXCURSION IN EVERY PORT
SAILING: February 20, 2027
CRUISE CODE: SD206

Sailing from Portsmouth · Bergen, Norway · Ålesund, Norway · Trondheim, Norway · Honningsvåg, Norway · Alta, Norway · Tromsø, Norway · Flåm, Norway.

Returning to Portsmouth.

AURORA BOREALIS OVER NORWAY

SAVE up to 35% off the full fare[^]

All prices from Feb 20, 2027. SD206	DOUBLE/TWIN Balcony Cabin			SINGLE Balcony Cabin			
	Standard	Deluxe	Suite	Standard	Superior	Deluxe	Suite
Full fare	£7,942	£12,811	£17,531	£12,455	£13,010	£19,285	£24,191
Current fare	£5,956	£8,967	£11,395	£9,341	£9,757	£14,463	£15,724

Cruise code: SD206. Fares are per person and the lowest available in the category shown and are subject to availability and change. [^]Fares above include applicable percentage discount off the full fare – see page 19 for details. We cannot guarantee the appearance of the Northern Lights, which is a natural phenomenon, but this cruise will take you to the best spot at the best time of year for sighting them. You'll be given an Arctic jacket so that you can fully enjoy all the activities and excursions on offer.

ESSENTIAL INFORMATION

All reservations are subject to Saga's booking conditions which will be sent to you with your holiday confirmation and are available in advance upon request by calling us on 0800 504 505 or visiting our website travel.saga.co.uk. The holiday contract is subject to English law and the exclusive jurisdiction of the English courts. You may however choose the law and jurisdiction of Scotland or Northern Ireland if you live there and wish to do so. The holiday contract is created 14 days following your receipt of the written holiday confirmation.

BOOKING YOUR CRUISE

Age qualification: Saga cruises are for anyone aged 50 and over. A travelling companion or family member travelling with you may be aged 40 or over.

How our discounts work: On all our cruises we set aside a number of cabins within each grade at a discounted fare, with the highest discount of 35% available on selected grades. These cabins are sold on a first come, first served basis. As cabins are sold, the discount begins to reduce, and continues to reduce, until those selected cabins are sold. This means that the earlier you book, the higher the chance of securing a greater discount. Our price panels clearly show the full cruise price, along with the discounted fare applicable at the time of going to print. Please note that during peak booking periods discounts can reduce quickly.

Prices: We do not impose surcharges. Once booked, the cost of your cruise package cannot be increased unless you amend your booking. We reserve the right not to be legally bound in the case of incorrect pricing and acknowledgement of such an error does not mean acceptance of it.

Cruise Price Promise: Should we ever reduce our prices or introduce a new special offer after you book, we will calculate the price difference and pass the value of any possible saving back to you (optional ad-hoc services are excluded). This applies as long as the discounted cruise is exactly the same package offered under exactly the same terms of sale (which means the full terms that apply to your holiday contract, including your cabin grade and whether your cabin is allocated at the time of booking or at embarkation). In calculating any possible saving due, we'll take into consideration all offers and discounts that were applied at the time of booking and compare the overall price that you've been charged with the current price. We will pass on the value of the saving in the form of a higher-grade cabin, on-board credit, or other value-added benefit.

Special offers: In the case of discounted prices and other special offers, please note that there are only a limited number of places available at the special offer prices. We reserve the right to extend, reduce or withdraw the offers at any time, without notice.

What we describe: Some of the highlights detailed may only be seen on optional excursions, at an additional cost, or by exploring independently. Advertised amenities, included and optional excursions, entertainment and activities may change or become unavailable. We will notify you of any known changes at the time of booking. Final details of optional excursions will be sent to you before you travel although we cannot guarantee they will be available during your cruise. We have planned to use economy class on flights (where relevant).

Please also note that changes may be made to the particulars within the brochure at any time after publication.

Guarantee Cabins: The traditional way to book a cruise is to reserve your cabin number at the time of booking. However, if you've decided what type of cabin you want, but don't have a preference for a particular cabin or bed configuration, then our Balcony Guarantees could be for you. You are guaranteed the minimum grade cabin in the category shown, just not the specific cabin. This will be allocated to you later on, sometimes as you embark the ship. If you choose not to accept your allocated cabin, which could be located anywhere on the ship, this will be treated as a cancellation by you and cancellation charges will be payable in accordance with our booking conditions. There is the chance you may be upgraded, although this is subject to cabin availability and in no way forms part of this offer. Note that twin cabins may have two single beds or a double bed. To see the prices of our Guarantees, look out for the † symbol in the price panels.

Insufficient bookings: If we need to cancel your cruise due to insufficient support we would do so before the balance due date.

Optional ad-hoc services: We provide you with the option to specifically request extras which are in addition to, or adaptations of, our standard packages. Prices for optional ad-hoc services such as extensions, extra accommodation, upgrades, additional flights that are not part of a standard Saga allocation and domestic flights ('ad-hoc service') can vary depending on when you book. Please note that adding an ad-hoc service may result in additional non-refundable charges to our standard packages due to changes in flight dates, changes to our standard allocated accommodation periods and additional costs passed to us from third party suppliers. They may also result in an additional or higher non-refundable deposit being payable. You will be notified of the total price of your holiday and any increase to your deposit prior to booking.

PAYING FOR YOUR CRUISE

Deposits: When you make your booking, you must pay a deposit of £250 per person or 15% of the cruise cost, whichever is the greater. Certain cruises may require an additional or higher non-refundable deposit or full payment. You will be advised if this is the case at the time of booking.

Balance: The balance of the price of your travel arrangements must be paid at least 90 days before departure. Unless you are otherwise advised, bookings made after the balance due date (as set out above) must be paid in full at the time of booking and we cannot confirm your booking until full payment is received. Payments can be made by credit card, debit card or cheque. If the deposit and/or balance is not paid in time, we reserve the right to cancel your travel arrangements. If the balance is not paid in time, we shall retain your deposit to cover costs incurred.

Your financial protection and peace of mind: Some of the flights and flight-inclusive cruises in this brochure are financially protected by the ATOL scheme. But ATOL protection does not apply to all holiday and travel services listed in this brochure. If you do not receive an ATOL Certificate then the booking will not be ATOL protected. If you do receive an ATOL Certificate but all the parts of your trip are not listed on it, those parts will not be ATOL protected. Please see our booking conditions for information, or for more information about financial protection and the ATOL Certificate go to: caa.co.uk. We ensure full financial protection is provided for all our cruise packages.



W8164 / W8179

1. For flight-based cruises this is through Air Travel Organiser's Licence number 0308 issued to ST&H Limited (another Saga group company) by the Civil Aviation Authority of Gatwick Airport South, West Sussex, RH6 OYR, UK caa.co.uk, telephone 0333 103 6350, email claims@caa.co.uk. When you buy an ATOL protected flight or flight inclusive cruise from us you will receive an ATOL Certificate. This lists what is financially protected, where you can get information on what this means for you and who to contact if things go wrong.
2. When you buy a cruise package that doesn't include a flight, protection is provided by way of a bond held by ABTA – The Travel Association of 30 Park Street London SE1 9EQ abta.com, telephone 0203 758 8779, email customerprotection@abta.co.uk. For further information, please see abta.com. Calls from UK landlines cost the standard rate, but from mobiles may be higher. Check with your network provider. Please note that items not purchased through Saga will not be protected.

BEFORE YOU TRAVEL

Passports: You will need a valid passport for all cruises featured. As requirements vary and can change without notice, we strongly advise you to ensure that your passport is valid for at least six months after the end of your cruise. We recommend that you have at least three blank pages in your passport to cover potential immigration formalities, which may be required in some countries. We recommend that you also take your passport for identification purposes when taking domestic flights. To meet Border Force security check requirements, Saga Cruises require certain passport information from you and your party in advance of your departure date. We will ask for this information at the time of booking. A failure to provide the passport information prior to your departure date may result in you and your party being denied boarding. If you or a member of your party are denied boarding in these circumstances, this will be treated as a cancellation.

Visas and ETAs: Unless we advise you otherwise at the time of booking, your specific passport and visa requirements, and other immigration requirements are your responsibility, and you should confirm these with the relevant Embassies and/or Consulates. We do not accept any responsibility if you cannot travel because you have not complied with any passport, visa or immigration requirements.

From 2025 it is expected that a full British citizen resident in the UK will need an ETIAS travel authorisation in order to enter most EU member states. You will be responsible for obtaining this authorisation before travel and you are also responsible for ensuring that you do not breach

any restrictions governing your length of stay in these countries. If you are a British citizen resident in the UK, you may wish to refer to government advice at <https://www.gov.uk/browse/abroad>.

Travel advice: The Foreign, Commonwealth and Development Office (FCDO) Travel Advice Unit provides up-to-date advice and safety information for British nationals travelling abroad. Please visit [gov.uk/foreign-travel-advice](https://www.gov.uk/foreign-travel-advice) for further information. We recommend you regularly check this information.

Health screening: We will require you to complete our pre-boarding health questionnaire, comply with any of our health screening requirements (including, without limitation, mandatory testing for COVID-19) and to supply full and accurate information of any symptoms of or positive tests for viral or bacterial illness you or a member of your party may have including, without limitation, COVID-19. Refusal to complete our questionnaire or comply with our health screening requirements may result in you being denied boarding. If you are denied boarding in any of these circumstances, this will be treated as a cancellation by you and cancellation charges may apply.

Further, to avoid the spread of any viral or bacterial illness on board including, without limitation, COVID-19, we may deny boarding to any passenger who displays symptoms of any such illness or who in our reasonable opinion may be at risk of having contracted any such illness. If you are denied boarding in these circumstances, you will not be entitled to a refund but you may amend your cruise to a different date.

COVID-19 vaccinations: We recommend that all passengers are vaccinated against COVID-19 using a COVID-19 vaccine approved by the UK's Medical and Healthcare Regulatory Authority.

Other vaccinations: We will advise you with your holiday confirmation of any other vaccinations that are required as a condition of entry to the country(ies) that you are visiting. We recommend that you consult your doctor at least 12 weeks before departure, and they will advise you about any other vaccinations required. You may also wish to refer to government health advice for your destination at [gov.uk/foreign-travel-advice](https://www.gov.uk/foreign-travel-advice).

Mobility and assistance: Our cruise ships have a limited number of cabins adapted for use by those with restricted mobility and are limited as to the number of disabled passengers or passengers with reduced mobility that they can carry. We reserve the right to refuse the carriage of any person if carrying such a passenger would breach applicable safety requirements or law. We also reserve the right to refuse carriage if the

design of the vessel and/or the port infrastructure and equipment would make carriage unsafe or not operationally feasible. We reserve the right to require that a disabled passenger or a passenger of reduced mobility is accompanied by another fare paying person capable of providing assistance to ensure compliance with any applicable safety requirement or law or if the design of the vessel and/or the port infrastructure and equipment means that a disabled passenger or person of reduced mobility cannot be carried in a safe or operationally feasible manner without the assistance of another person.

Please advise us at the time of booking if you or any member of your party has reduced mobility, require a specially adapted cabin or would require assistance in an emergency, or as soon as possible before departure should there be a change in circumstances. If you do not inform us of such a condition we will not be liable if any airline (where applicable) refuses to accept you or any member of your party as a passenger. If you are disabled or have difficulty moving around, you are legally entitled to receive assistance when you fly. This free service is available to anyone with mobility problems, for example, because of your disability, age or a temporary injury. To take full advantage of the service you need to book at least 48 hours in advance of your flight. Please contact us as soon as possible prior to departure. You can also visit our website travel.saga.co.uk. Please note that personal daily care cannot be provided by any member of the ship's staff.

Food allergies or specific dietary requirements on board the ship:

If you've got any food allergies or specific dietary requirements, it is important that you advise us at the time of booking. It is also essential that you make the maître d' aware of your allergies or dietary requirements after arriving on board and ask for information about ingredients before eating. Cruise guests are also reminded that any required medications should be kept with them at all times.

ON BOARD

Health and Safety procedures: We have developed stringent procedures for dealing with viral or bacterial illnesses in relation to our cruises. These procedures may mean that some facilities and services may not be available during the cruise package. The procedures may also change at short notice depending on the circumstances and latest advice and guidance available in respect of the particular illness. Any procedures introduced to prevent or limit the spread of viral or bacterial illnesses will not be a significant change to your cruise package. You are required to follow our instructions or those of the Master or the ship's crew in respect of any procedures designed to prevent or limit the spread of viral or bacterial illnesses. This may include the mandatory wearing of face masks in all public areas. If you fail to comply with our procedures or our instructions or those of the ship's Master or crew or your health or conduct is likely to endanger the health and safety of other passengers or crew, we and/or the ship's master reserve the right to take reasonable and appropriate action which could include the curtailment of your cruise package. In such circumstances, no compensation or refund will be payable and, in the event of curtailment, you will be liable to pay any additional expenses reasonably incurred in arranging the curtailment.

We guarantee you will love your first cruise, or your money back!

Available to guests that have not previously cruised with Saga Cruises. To take advantage, you must state your intention to leave your cruise early to the Hotel General Manager/Cruise Director during the first 72 hours for cruises seven nights or over; or during the first 48 hours for cruises under seven nights. They will endeavor to resolve any issues within 48 hours, but if a solution cannot be agreed in this time, Saga will arrange and cover the cost of your return transport home at the next available port and refund the price of your cruise. We will not refund costs incurred for items not purchased directly through Saga, such as, but not limited to, overnight accommodation or third-party insurance. The guarantee does not affect Saga's standard booking conditions or pre-departure cancellation policy which are available at: saga.co.uk/loveit Further terms and conditions may apply.

DATA PROTECTION

Any personal data you provide will be held securely and for the purpose you have provided it, in accordance with data protection legislation. We may need to disclose personal data to a third party including outside the European Economic Area (EEA) for the purpose of providing your holiday. In addition, your data may be disclosed to regulatory bodies or public authorities, such as customs or immigration, for the purposes of monitoring and/or enforcing compliance with any regulatory rules/codes; and it may be used for marketing, offering renewals, research and statistical purposes and crime prevention. Where you provide information about another person, we accept it on the basis that you have their permission to give us access to their personal data (including special category personal data) and that you have told them who we are and what we will use their data for, as set out above. If Saga has obtained your permission to do so, they will also contact you by post, telephone, email or other means to tell you about offers, products and services that may be of interest to you. At any time you can opt out of receiving such information, revise the products you would like to hear about or change the method they use to communicate with you. You can update these preferences by calling 0800 092 3665.

For further information about how the Saga Group uses your personal information, please visit saga.co.uk/privacy-policy or contact the Data Protection Officer by email: data.protection@saga.co.uk or post: Saga PLC, 3 Pancras Square, London N1C 4AG.

INSURANCE

You must be adequately insured for all cruises to cover all contingencies such as medical expenses, repatriation, and baggage cover. We offer optional comprehensive travel insurance with all our cruises. If you do not purchase the optional travel insurance and additional cancellation rights, or if we're unable to offer the optional cover, we advise that you arrange adequate insurance cover as soon as possible

Saga optional travel insurance: For UK residents only, insurance, underwritten by Astrenska Insurance Limited, is offered with all our ocean cruises unless otherwise stated and subject to terms and conditions. A policy document will be sent with your confirmation invoice. A summary of the cover is shown below.

Summary of cover

- (a) Medical Expenses up to £5,000,000
(b) Hospital Benefit £20 per day (max. £500)
- Curtailment up to £10,000 for European ocean cruises and up to £50,000 for worldwide ocean cruises
- Personal Accident up to £15,000
- Criminal Injury Benefit up to £100,000
- (a) Baggage up to £2,500
i) Single Article limit £300
ii) Overall Valuables limit £350
(b) Temporarily Lost Baggage over 12 hours up to £150
- Money and Documents up to £500, Cash limit £200
- Loss of Passport Expenses up to £200
- Personal Liability up to £1,000,000
- Missed Departure up to £500 (Europe), up to £1,000 (worldwide)
- Travel Delay – Transport
(a) Deposit/Cancellation Charges up to £7,500
(b) Compensation up to £150
- Legal Expenses (claims for compensation for personal injury or death) up to £50,000

If you have your own insurance, we will offer you the cruise at a lower price. Please visit our website or call for further details.

Please be aware this policy will only provide cover for any claims caused by or relating to Coronavirus Disease (COVID-19), or any mutation of, under the 'Emergency medical associated expenses' section of our policy book. This section provides insurance for emergency medical and associated costs not covered by the National Health Service or any reciprocal health agreement. For sections 1(a), 2, 5(a), 6 and 10(a) above, the first £70 of each and every claim is excluded. Please note that the optional travel insurance and additional cancellation rights are only available for overseas holidays where the included cruise, flights or ferry elements of the holiday are taken. If you arrange your own travel abroad, you will not be covered and should make alternative arrangements. If you feel you need increased baggage cover please check your home contents insurance policy first, as most people can have their personal possessions insured under this policy while they are away. If you are suffering from, or in the last 12 months have suffered from, an illness that has required treatment from a doctor, you must advise us and we'll confirm whether you can be covered under this insurance. Insurance policy document If you choose to take the insurance, we will send you the insurance policy document with your holiday confirmation/invoice, or you can call us to request it earlier. If the policy does not meet your requirements, you are entitled to cancel at any time prior to your date of departure. The policy document contains full details of the cover provided, our complaints procedure, terms and exclusions. We recommend that you read it carefully.

Bookings made 18 months or more before departure: This section only applies to cruises offered with optional travel insurance and additional cancellation rights. Our optional travel insurance and additional cancellation rights cannot be offered with cruises booked more than 18 months before departure. Customers who wish to include the optional travel insurance and additional cancellation rights will have their booking held until 18 months before the departure date. Should you need to cancel prior to your booking being confirmed, a full refund will be available. Once within 18 months of departure, the optional travel insurance and additional cancellation rights can be added and the cruise confirmed. This is subject to the normal insurance policy conditions and Saga's booking conditions.

Additional cancellation cover: Where you have chosen to include the optional travel insurance you benefit from additional cancellation cover which allow you to cancel your cruise under a range of different circumstances and receive a full refund of all the money you have paid to us, less an administration of £100 per person. Please refer to our full booking conditions for details.



Enjoy daily afternoon tea in the Britannia Lounge

CRUISE CALENDAR 2027

Spirit of Discovery

DATE	CRUISE	OFFERS	NIGHTS	DEPARTS	CODE
Jan 6, 2027	Casablanca and Canary Island Duo	*NEW* SAVE up to 35%	14	Portsmouth	SD203
Jan 20	Canary Island Sunshine	*NEW* SAVE up to 35%	15	Portsmouth	SD204
Feb 4	A Taste of Morocco and Historic Spain	*NEW* SAVE up to 35%	16	Portsmouth	SD205
Feb 20	Northern Lights and Arctic Vistas	*NEW* SAVE up to 35%	17	Portsmouth	SD206
Mar 9	The Balearics and Western Mediterranean	*NEW* SAVE up to 35%	15	Portsmouth	SD207
Mar 24	The Canary Islands in Spring	*NEW* SAVE up to 35%	14	Portsmouth	SD208

Spirit of Adventure

DATE	CRUISE	OFFERS	NIGHTS	DEPARTS	CODE
Jan 7, 2027	A Grand Voyage to South America	*NEW* SAVE up to 35%	73	Portsmouth	SU180
Mar 21	Egypt and the Eastern Mediterranean	*NEW* SAVE up to 35%	27	Portsmouth	SU181

To book, contact your appointed travel agent

Travel agents call free on **0808 134 0120** or book online at **www.sagaagents.co.uk**



W8164 / W8179

Saga Holidays is a trading name of ST&H Ltd (registration no. 21740520) and ST&H Ltd and Saga Cruises Ltd (registration no. 3267858) are subsidiaries of ST&H Group Ltd (registration no. 0720588). All three companies are registered in England and Wales. Registered Office: Saga plc, 3 Pancras Square, London N1C 4AG. With respect to general insurance products sold in the UK, Saga Cruises Ltd is an appointed representative of Saga Services Ltd (company no. 732602) which is authorised and regulated by the Financial Conduct Authority. Please refer to the essential information, which includes details about financial protection and the ATOL Certificate. **NHW-SC9988**. Published October 2025.

EVERY CRUISE INCLUDES...

- ✓ A return nationwide chauffeur service from your home to the port*
- ✓ Unlimited luggage allowance, and portorage at the ship
- ✓ Optional travel insurance and additional cancellation cover^s
- ✓ An included excursion in every port
- ✓ Fine dining on board in a choice of five restaurants, including speciality dining
- ✓ All-inclusive drinks including premium spirits, premium wines, beers, mixers and soft drinks
- ✓ Complimentary Starlink Wi-Fi around the ship
- ✓ 24-hour room service
- ✓ Gratuities to all on-board crew
- ✓ Spa access to hydrotherapy pool, infrared sauna and steam room
- ✓ Afternoon tea
- ✓ A shuttle bus service into town at ports of call, when the ship is berthed at least 500 yards away
- ✓ Group tourist visas, if required
- ✓ All port taxes, fees and charges
- ✓ *Or enjoy an included flight from your local airport, with a chauffeur from home and again from the airport to the ship
- ✓ *Or choose complimentary parking at the port
- ✓ Entertainment and activities
- ✓ Fitness classes and use of the gymnasium, swimming pool and hot tubs
- ✓ Sailaway party.

Please note: Saga reserves the right to extend, reduce, or withdraw all offers at any time, without notice. ^sTravel insurance is underwritten by Astrenska Insurance Limited. A price reduction is available if you choose not to take the included insurance and additional cancellation cover. Cover is subject to a few medical questions.